

Science Booklet

Summer Work

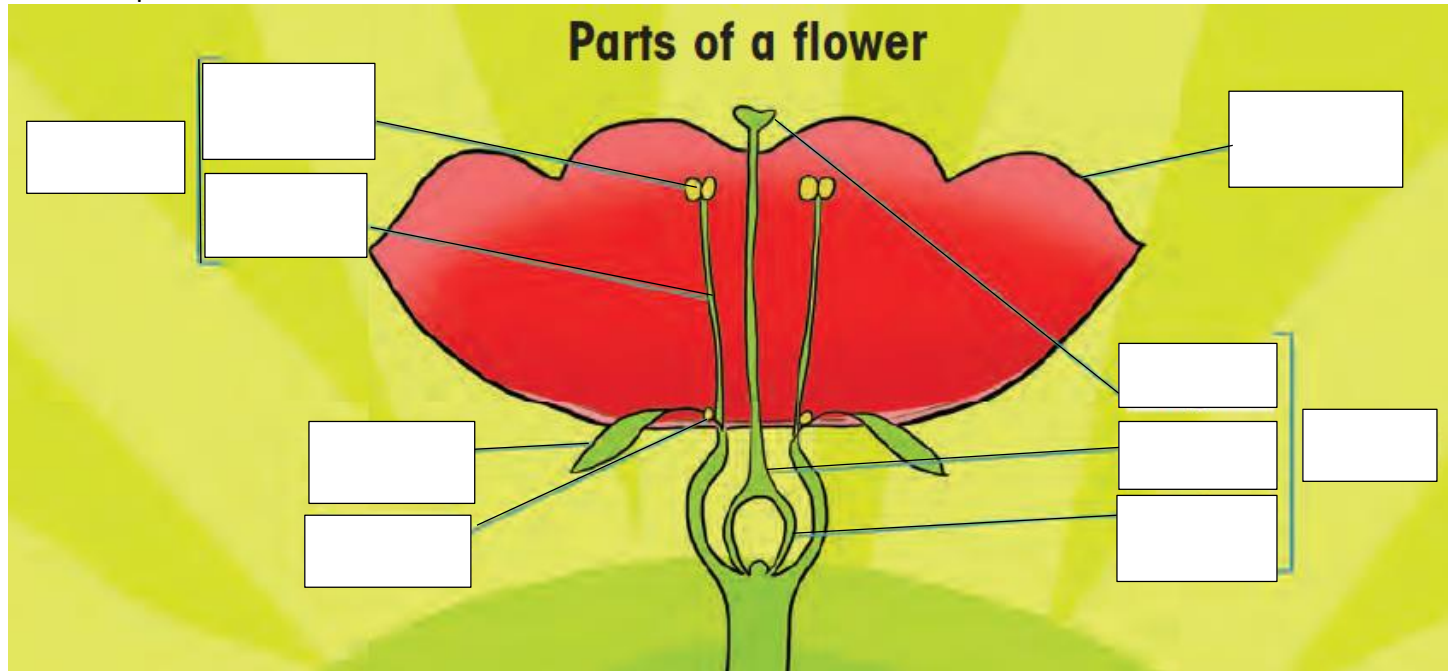


Grade 4

The questions below should be practiced by the student during the summer which will help him to be ready for next year:

Question 1:

Label the parts of the flower below:



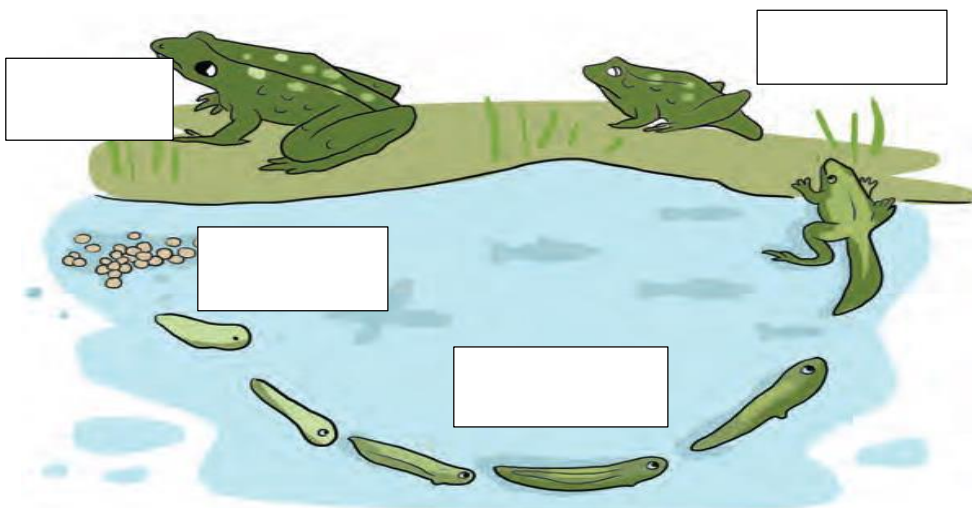
Question 2:

Fill in the blanks with the correct words.

- a- The pistil (or carpel) of the flower consists of : , , and
- b- The stamen of the flower consists of : and
- c- Pollination is the transfer of the from the anther to the
- d- The Contains the flower eggs (or ovules).

Question 3:

The figure below shows the life cycle of a frog



- a- Write in each box in the above, the proper name.

b- Complete the table below to show the differences between the tadpole and a frog.

	Tadpole	Adult frog
Where it lives?		
How it breathes?		

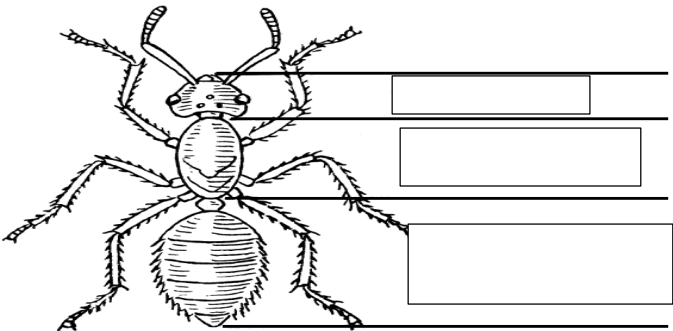
Question 4:

Indicate the true statement(s), and correct the false one(s).

- a- All birds have beaks.
- b- Birds and mammals are cold blooded.
- c- Mammals reproduce by laying eggs.
- d- The bat is the only mammal that can fly.
- e- Dolphin and whale are mammals.

Question 5:

Give the name of the body part on the insect diagram below:



Question 6:

Complete the table below

	Body covering	Body temperature	Habitat	Reproduction mode	Breathing mode
Birds					
Mammals					

Question 7:

Question 4:

Classify the following muscles as skeletal, smooth, or cardiac.

Muscles of the leg and arm – muscles of the stomach – muscles of the heart –muscles of the arteries.

Skeletal	smooth	cardiac

Question 8:

Write “V” for the voluntary action and “I” for the involuntary action.

1) Exercising:

2) Heart beating:

3) Blinking:

4) Talking:

5) Breathing:

6) Goose bumps:

Question 9:

Indicate the true statement(s), and correct the false one(s).

a- The skeletal muscles in the body work in opposing pairs.

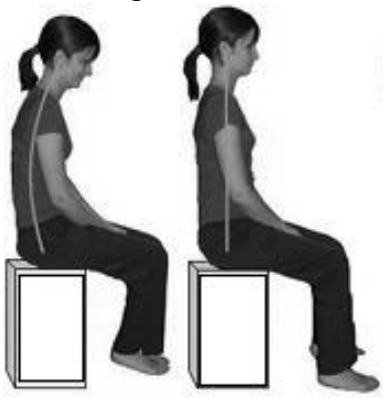
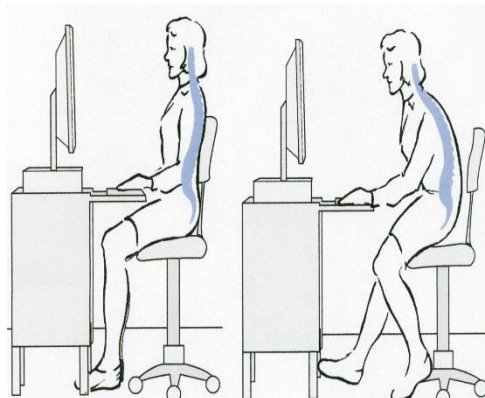
.....

b- Smooth muscles are attached to bones.

.....

Question 10:

Put a checkmark “✓” or an “X” mark in the corresponding box to indicate if the document shows a right posture or a wrong one.

☐☐☐☐☐☐

Question 11:

Answer briefly the following questions:

a- Which type of food helps you to grow and repair body tissues?

.....

b- Which type of food provides your body with energy?

.....

c- Which type of mineral helps your blood?

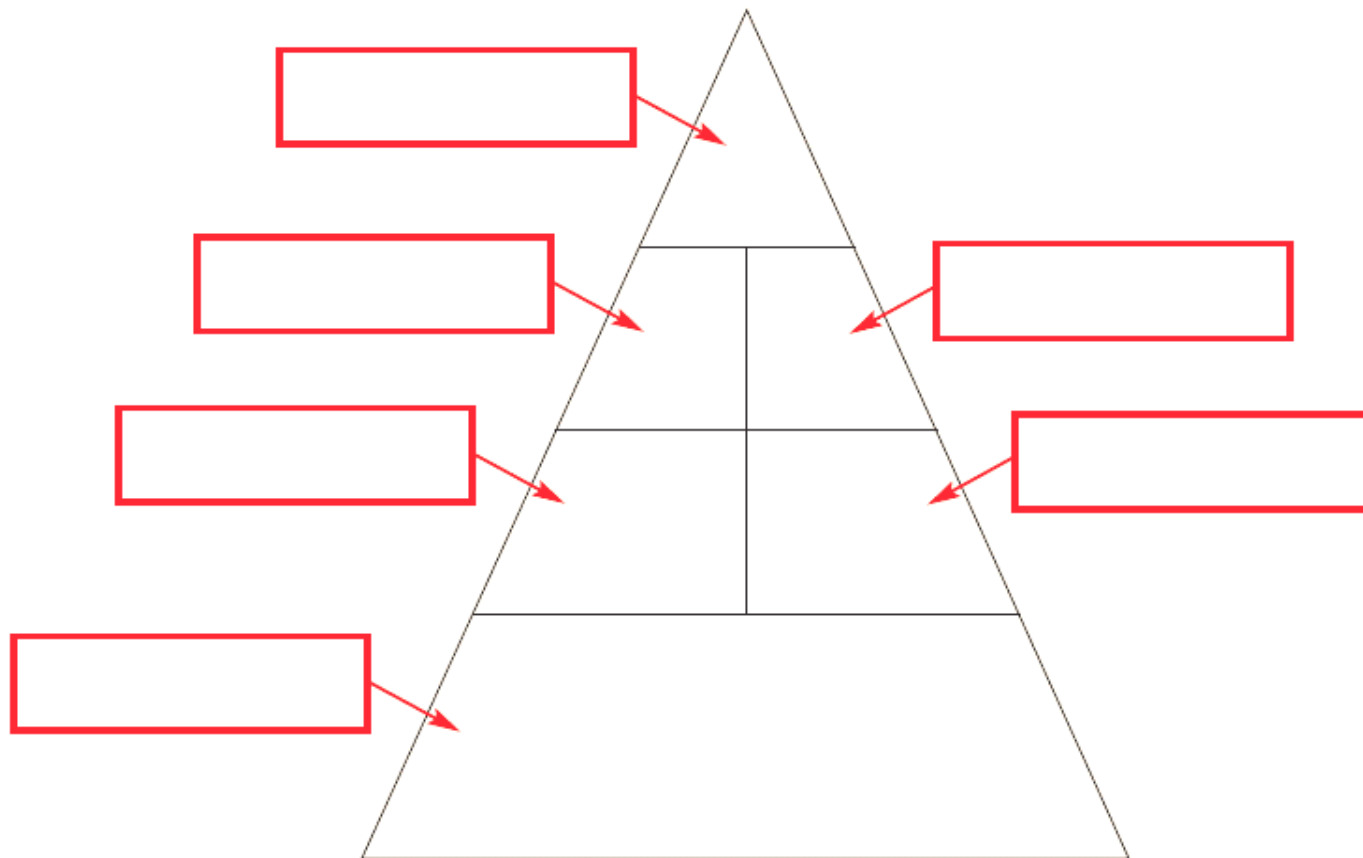
.....

d- Which type of food carries nutrients and waste products in the body?

.....

Question 12:

Write the name of each group in the food pyramid below, then fill each group with two examples.



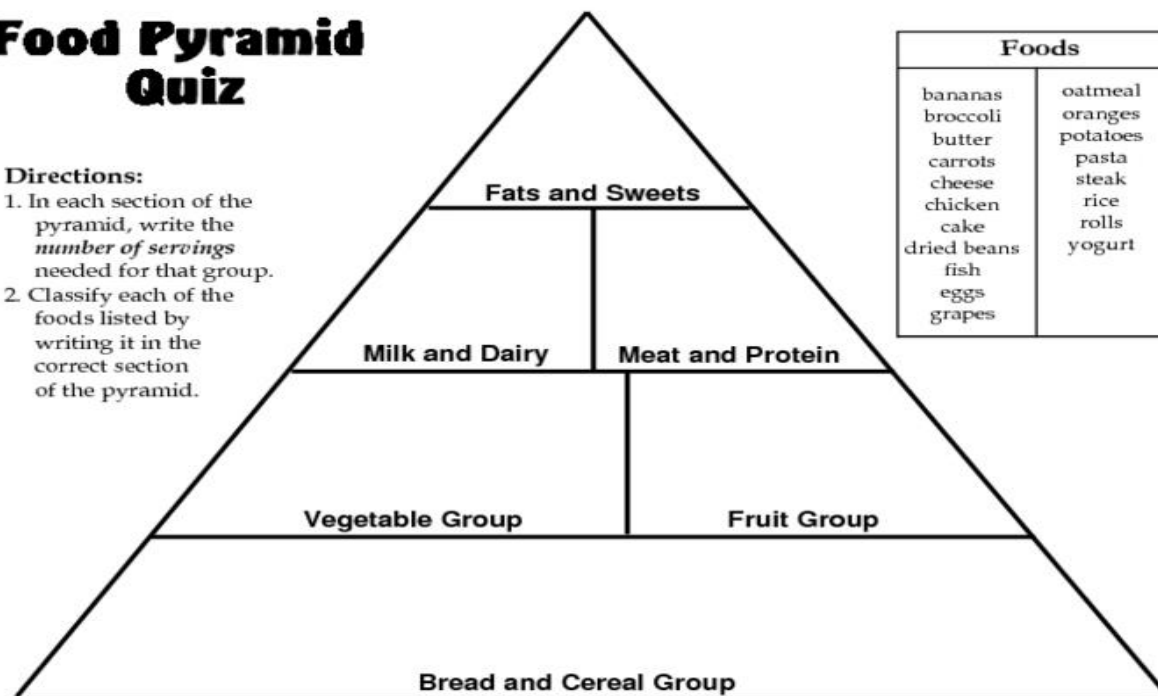
Question 13:

Food Pyramid Quiz

Directions:

1. In each section of the pyramid, write the *number of servings* needed for that group.
2. Classify each of the foods listed by writing it in the correct section of the pyramid.

Name _____ # _____



Foods	
bananas	oatmeal
broccoli	oranges
butter	potatoes
carrots	pasta
cheese	steak
chicken	rice
cake	rolls
dried beans	yogurt
fish	
eggs	
grapes	

Question 14:

Classify the objects below as solid, liquid or gas.

Ball – stone – oil – air – water vapor – water – pen – eraser – carbon dioxide – book- oxygen.

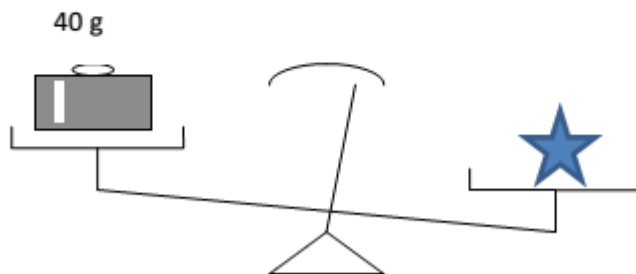
Solid	Gas	Liquid

Question 15:

Look at the figure below:



a- The mass of the star is less than or greater than 50 g?:

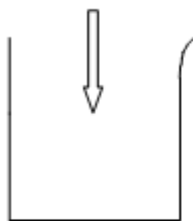


b- The mass of the star is less than or greater than 50 g?:

Question 16:

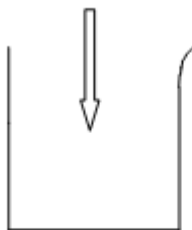
The containers below contain different mixtures.

Salt + Water



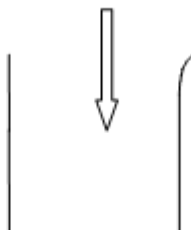
Container 1

Oil + Water



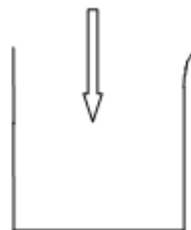
Container 2

Water + Mud



Container 3

Alcohol + water



Container 4

a- Indicate the containers that contain homogeneous mixtures. Justify.

.....

.....

b- Indicate the containers that contain heterogeneous mixtures. Justify.

.....

.....

Question 17:

Indicate the solute and the solvent in each mixture:

Mixture 1: adding few drops of ink to a cup filled with water.

Mixture 2: dissolving little amount of salt in a cup filled with water.

Mixture 3: dissolving oil in a cup filled with gasoline.

Mixture 4: we add to a cup filled with alcohol, small amount of iodine.

Mixture	Solute	Solvent