

Semester (3) Science Exam Review Worksheet

Grade 3

Topics Covered in the Exam:

Animals and plants in marine ecosystem (book page 48)

Practice page 49. Read page 50. Preview carefully the pictures of this lesson.

Sea Pollution (book page 52)

Study pages 54 and 55. Read page 56. Practice pages 57 and 58. Practice the exercise on page 62.

Question 1:

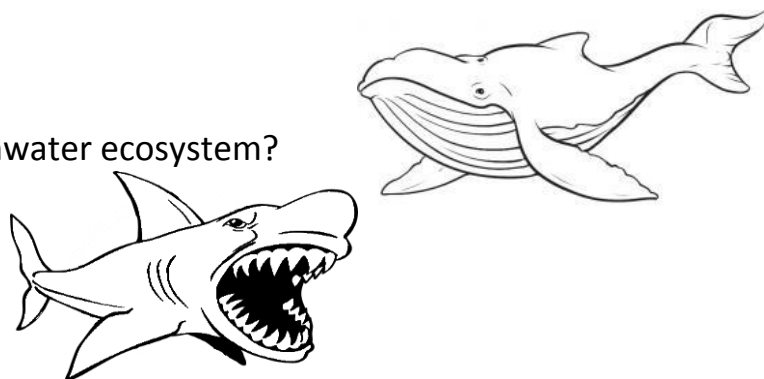
Check the correct answer/s. (4 marks; ½ mark for each correct choice)

- a. What is the place or condition in which a plant or an animal lives?
 - ☐ A habitat.
 - ☐ An ecosystem.
 - ☐ Freshwater.

- b. Sunlight, temperature and water are all abiotic (nonliving) components to an ecosystem. Which of the following is also an abiotic ecosystem component?
 - ☐ Soil.
 - ☐ Lions.
 - ☐ Trees.

- c. Which animal would you find in a freshwater ecosystem?
 - ☐ A whale.
 - ☐ A shark.
 - ☐ A frog.

- d. Which of the following helps in causing pollution?
 - ☐ Burning fuels by cars and trucks.
 - ☐ Spilling chemicals in rivers.
 - ☐ Oil spills in the oceans.
 - ☐ All of the above.



- e. Pollution can come from natural resources. Which one is a natural resource that can cause pollution?
- ☐ Cars oil.
 - ☐ Forest fires.
 - ☐ Oil spills.
- f. Which one of the following is a saltwater ecosystem?
- ☐ Pond.
 - ☐ River.
 - ☐ Ocean.
 - ☐ Sea.
- g. What is the difference between freshwater and saltwater ecosystem?
- ☐ Freshwater ecosystems don't have plants, and saltwater ecosystems do.
 - ☐ Saltwater ecosystems have a lot of salt, and freshwater ecosystems don't.
 - ☐ Freshwater ecosystems have three habitats, and saltwater ecosystems have one.

Question 2:

Answer by "True" or "False". Correct the false statements. (3 marks)

- a. The Palm tree lives in high temperature environment.
.....
- b. In the desert, cacti plant hide during the day and they come out at night.
.....
- c. Burning leaves or trash contributes to air pollution.
.....
- d. Animal life and plant life in marine ecosystems are more abundant near the surface than in deep areas.
.....
- e. Kelp is a type of algae.
.....

Question 3:

For each of the following, describe the limiting factor that makes each statement unlikely or even impossible. (4 marks; 1 mark for each clear answer)

a. A whale living in a lake.

.....

b. A penguin living in Saudi Arabia's desert.

.....

c. A cactus living in the rain forest.

.....

d. A palm tree living in Alaska.

.....

Question 4:

Considering a marine ecosystem.

a. Mention 2 animals that live in a freshwater ecosystem and 2 animals which live in a saltwater ecosystem. (2 marks; ½ mark for each correct answer)

Freshwater Ecosystem	Saltwater Ecosystem
.....
.....

b. Can these animals survive in a forest ecosystem or in a desert ecosystem? Why? (1 mark)

.....

.....

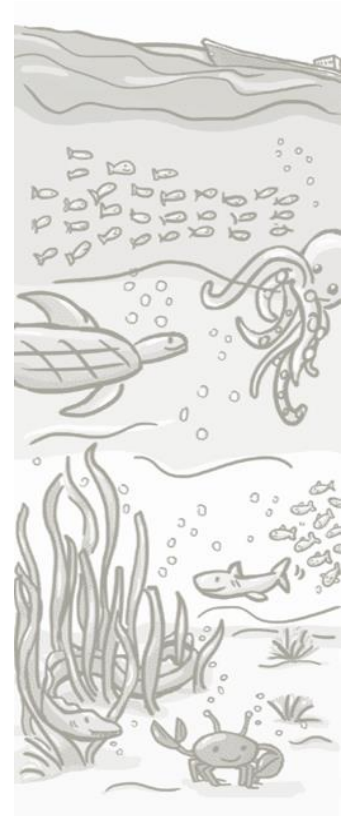
c. Mention 2 plants that live in it. (1 mark)

.....

.....

d. What does the marine ecosystem provide these living things with? (1 mark)

.....



Question 5:

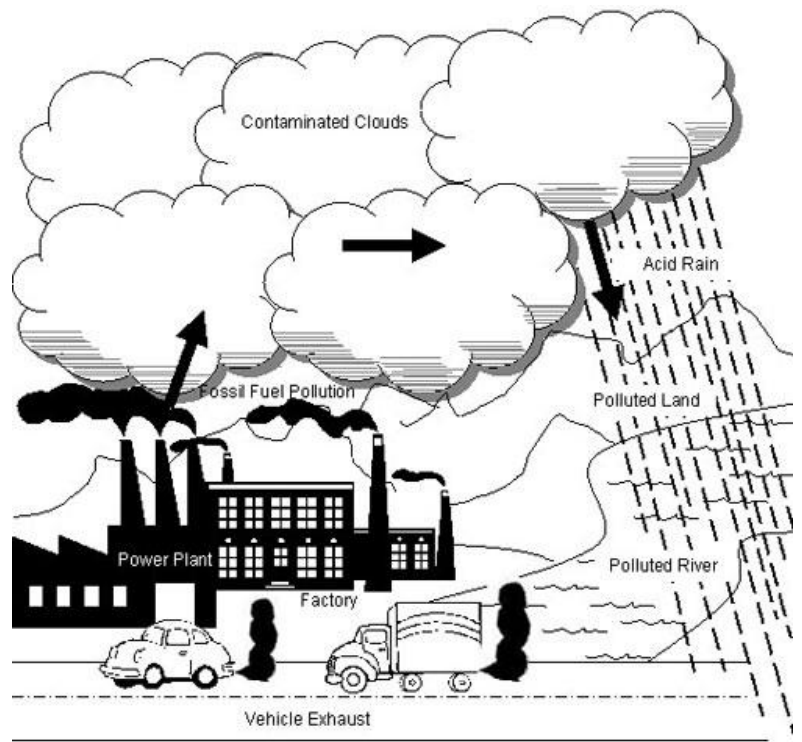
Observe the drawing then answer the questions.

- a. Give two types of pollution. (1 mark)

.....
.....

- b. Mention 2 causes of air pollution. (1 mark)

.....
.....



- c. Give two solutions to decrease air pollution. (2 marks; 1 mark for each clear answer)

.....
.....